

Code

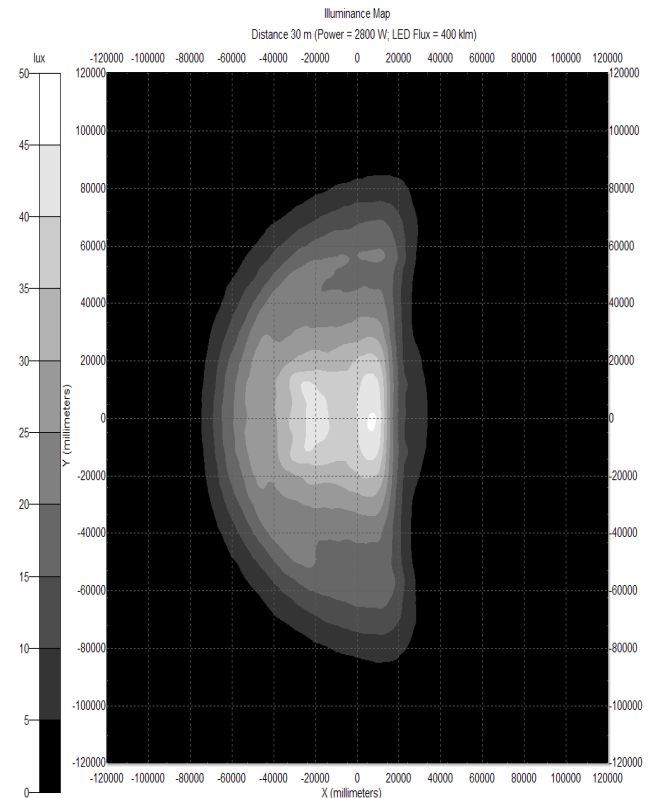
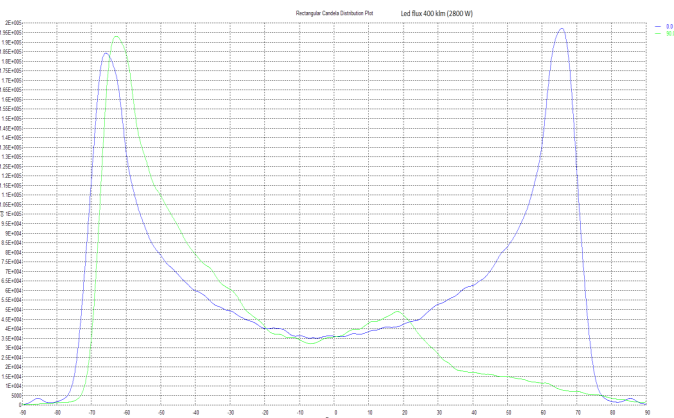
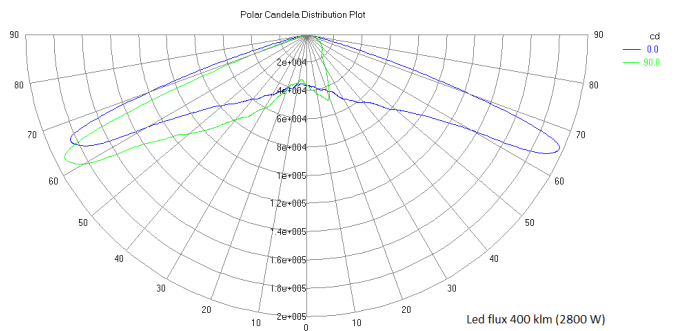
SAST 02



Degree : 150° ±3%.

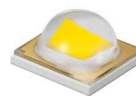
Used LED

Power LED Series **Samsung LH351B**



Power LED Series **Samsung LH351B**

DIALux



Luminous flux (Luminaire): 286545 lm

Luminous flux (Lamps): 368540 lm

Luminaire Wattage: 2580.0 W

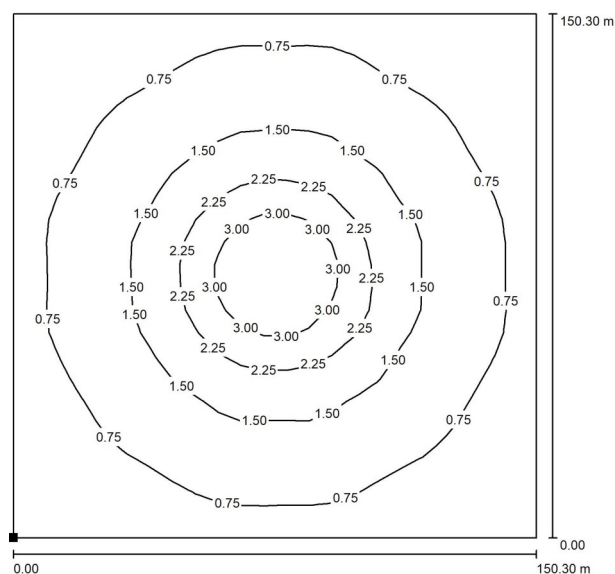
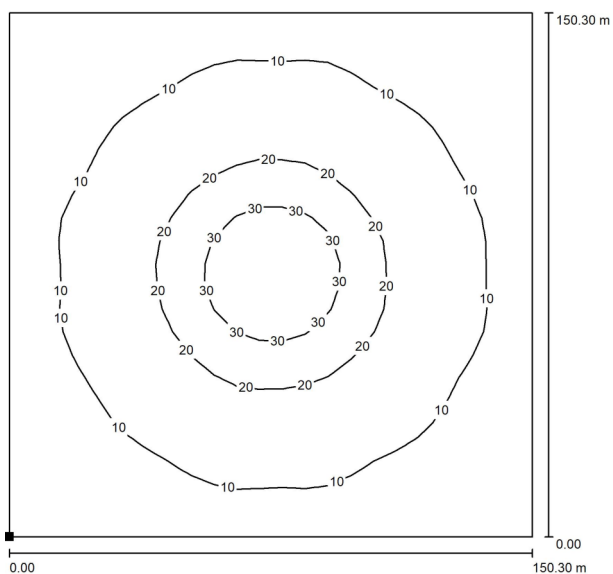
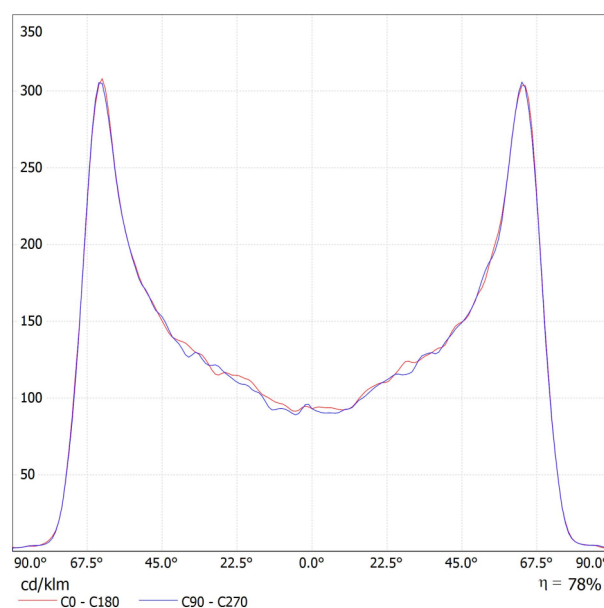
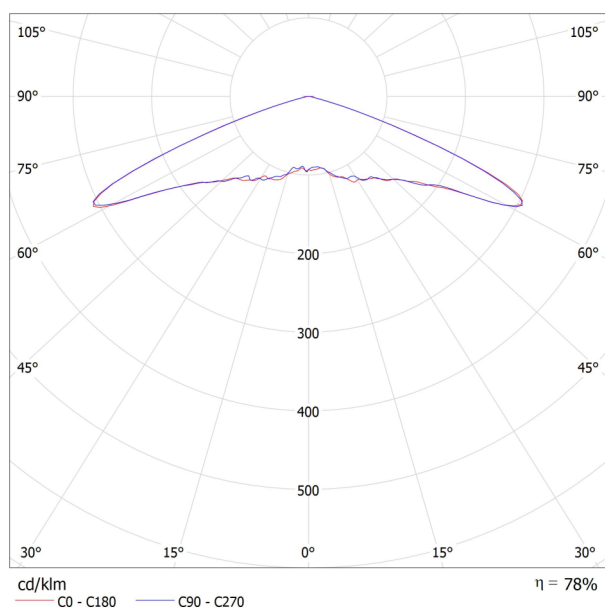
Luminaire classification according to CIE: 100

CIE flux code: 24 61 97 100 78

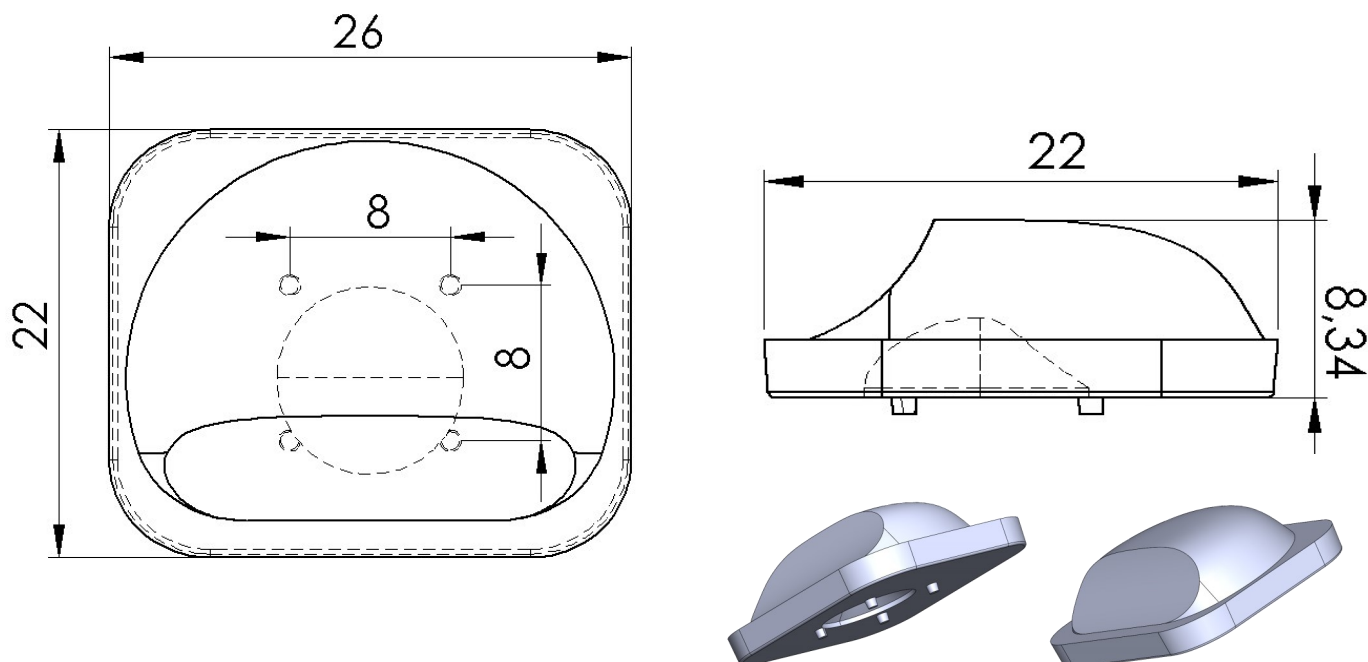
Fitting: 1 x Luminaire (Correction Factor 1.000).

See our luminaire

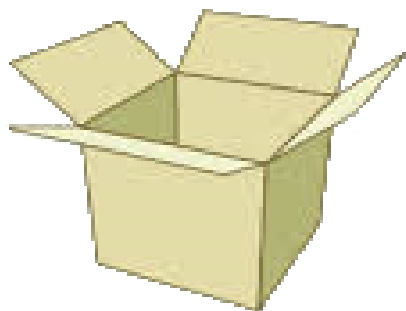
catalog for an image of the luminaire.



LENS MEASUREMENTS



PACKAGING INFORMATION



Box Quantit : 160 X 8 = 1280 PCS
Box Size : 25*25*16 cm
Box Total Kg -/+%3: 5:10 Kg

Attention & General information

TURLENS Custom Optical Design & Manufacture (Lens for LED's) All technical data contained in this document are properties of "TURLENS". Turlens may subject to change the content without prior notice.

*Lens Use :Streets, Offices, Homes, Stages, Architectural, DownLight , & Decorative Lighting.

Lens Material Optical Grade PMMA / PC. Best Available Optical Efficiency & Light Transmittance High.

Operating Temperature: -40°C ~ + 80°C (upper limit +80°C) PMMA UV Resistant.

Operating Temperature: -40°C ~ + 90°C (upper limit +90°C) PC with UV & V2.

Average transmittance in visible spectrum: 400nm~700nm> 90% - (3mm thick PMMA)

*Holder information Operating Temperature: -40°C ~ + 90°C PC R O H S , UV & Flammability Standard V2.

Assembly info.

*If adhesive is used, make sure that the adhesive is acid-free., *If you need to clean the lenses, use only mild soap and water.,
 *Use very soft cloth to dry., *Do not use any solvents on lenses., *Our product is guaranteed against manufacturing defects only.,
 *Do not store the product in a dusty & corrosive environment., *Do not touch the optical portion of the lens with your bare hands.